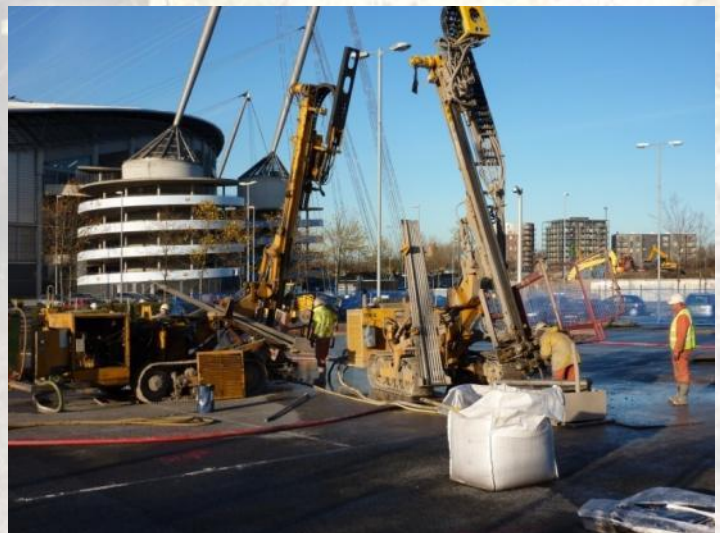


M&J DRILLING SERVICES LTD.





M&J

DRILLING SERVICES LTD.





DRILLING SERVICES LTD.

**Unit 44, Coneygree Industrial Estate
Tipton, WEST MIDLANDS DY4 8XP**

Telephone: 01902 885241

Fax No: 01902 887257

E-Mail: enquiry@mandjdrilling.com

Website: www.mandjdrilling.com

M & J Drilling Services Ltd is a specialist drilling company. Our core services include Investigation & Treatment of Shallow Mine workings & Mine entries, Large Void Infill, Ground Source Heating Boreholes, Soil Nailing, Rock Anchors and Sonic Drilling.

Our main works involve the investigation & stabilisation of voids arising from both man made and natural processes. We also undertake more specialist grouting projects.

Founded in 1982 the company has expanded from a small local contractor to operating nationally across the UK.

We are currently accredited for ISO 9001, Investors In People, CHAS & ConstructionLine. All of our operators are CSCS card holders, with 100% having obtained their NVQ Level 2.

We aim to develop strong relationships with both consultants and developers and are proud of the fact that over recent years 85% of our turnover has been repeat business.

A modern forward thinking company, we are constantly looking to both expand & improve the services we offer.

All of our drill rigs are now fitted with drill guards to HSE requirements.



CAPABILITIES

STABILISATION OF SHALLOW MINeworkINGS & MINE ENTRIES

M & J Drilling Services Ltd has been involved in the stabilisation of shallow mineworkings & mine entries for over 25 years



Fig 1 Stabilisation works near Eastlands, Manchester

Utilising a modern fleet of drill rigs we operate throughout the UK from our base in the West Midlands. We undertake the stabilisation of mineworkings for both residential and commercial/industrial developments.



Fig 2 Drilling to stabilise mineshaft in back garden

We have extensive experience of stabilising various former mines including Coal, Chalk, Salt, Limestone & Ironstone.

We have invested heavily in new ancillary plant including 3 horizontal silos.



Fig 3 Drilling to a stabilise mineshaft, Telford



Fig 4 Reinforced Concrete Cap Construction

Some examples of recent projects:

West Bromwich – Stabilisation of 2 mineshafts beneath proposed petrol garage. Permeation Grouting of superficial material for reinforced concrete cap construction. Value £160,000

Prescot – Stabilisation of shallow Coal mineworkings for residential development. Value £750,000

Manchester Sport City – Stabilisation of shallow Coal mineworkings & mineshafts for major retail & leisure development. Value £500,000

BULK INFILL OF MINEWORKINGS & OTHER VOIDS

M & J Drilling Services has been involved in the stabilisation of mineworkings and voids by bulk infilling for over 25 years.



Fig 1 Bulk grouting plant

Utilising both our fleet of modern drill rigs and computer controlled grout batching plants we have stabilised numerous mines throughout the UK including Coal, Chalk, Salt, Limestone & Ironstone. This has included work on both large open sites through to residential housing estates and working retail parks.



Fig 2 Gravel barrier installation

We have stabilised both full and individual sections of mines as the particular developments allow.

Gravel barriers can be formed within the mine in open voided ground in order to contain the grout infill material within the specific area required. This ensures that cost is minimised.



Fig 3 Drilling for Tunnel Infill

We also offer bulk grouting for tunnels, sewers and other man made voids that require decommissioning.

We have undertaken grouting operations on a range of structures from small diameter sewer/drainage runs up to large diameter former rail tunnels.

Some examples of recent projects:

Northwich, Cheshire – Infill of 3 abandoned Salt Mines. Injection of over 1 million tonnes of grout. (Working in partnership with Wrekin Construction). Value £4.5 Million. Project Value £30 Million.

Pentland, Edinburgh (Phase 2) – Infill of former Limestone Mine beneath working retail park. Value £1.5 Million

Pentland, Edinburgh (Phase 1) – Infill of former Limestone Mine on working retail park. (Working in partnership with Wrekin Construction). Value £500,000

Oxfordshire – Infill of Chalk Mine beneath existing housing estate. Value £350,000

BULK INFILL OF MINEWORKINGS & OTHER VOIDS

M & J Drilling Services has been involved in the stabilisation of mineworkings and voids by bulk infilling for over 25 years.



Fig 1 Bulk grouting plant

Utilising both our fleet of modern drill rigs and computer controlled grout batching plants we have stabilised numerous mines throughout the UK including Coal, Chalk, Salt, Limestone & Ironstone. This has included work on both large open sites through to residential housing estates and working retail parks.



Fig 2 Gravel barrier installation

We have stabilised both full and individual sections of mines as the particular developments allow.

Gravel barriers can be formed within the mine in open voided ground in order to contain the grout infill material within the specific area required. This ensures that cost is minimised.



Fig 3 Drilling for Tunnel Infill

We also offer bulk grouting for tunnels, sewers and other man made voids that require decommissioning.

We have undertaken grouting operations on a range of structures from small diameter sewer/drainage runs up to large diameter former rail tunnels.

Some examples of recent projects:

Northwich, Cheshire – Infill of 3 abandoned Salt Mines. Injection of over 1 million tonnes of grout. (Working in partnership with Wrekin Construction). Value £4.5 Million. Project Value £30 Million.

Pentland, Edinburgh (Phase 2) – Infill of former Limestone Mine beneath working retail park. Value £1.5 Million

Pentland, Edinburgh (Phase 1) – Infill of former Limestone Mine on working retail park. (Working in partnership with Wrekin Construction). Value £500,000

Oxfordshire – Infill of Chalk Mine beneath existing housing estate. Value £350,000

SONIC DRILL RIG

M & J Drilling Services Ltd was the first UK Drilling Contractor to utilise sonic drilling technology. The Sonic Drill Rig gives Engineers the option of taking samples in complex ground conditions which would otherwise be difficult or prohibitively expensive.

The Sonic SDC 550 drill rig is track mounted enabling it to access most sites.



Fig 1 Sonic drilling on former open cast mine

The sonic drill rig allows us to take continuous core samples through superficial materials without the use of any flushing medium. This makes the rig ideal for both contaminated sites and for sites with sensitive soils.



Fig 2 Sonic core sampling on contaminated site

The sonic drill method allows us to drill large diameter cased boreholes (220mm diameter) through sands & gravels extremely quickly.



Fig 3 Large diameter well installation

Our Sonic Drill Rig has been involved in a variety of differing projects around the UK.

Some examples of recent projects:

London- Continuous dry core sampling through superficial deposits (Lambeth Group) to identify sand and gravel lenses on intended tunnel/sewer route.

Swansea, Wales- Continuous dry core sampling through colliery spoil to allow a coal recovery assessment to be undertaken.

Montrose, Scotland- Installation of steam wells for removal of volatile organics from fill material.

Manchester- Continuous dry core sampling through superficial material & former gas tanks to allow for contamination testing. Installation of wells for vapour extraction remediation.

GROUND SOURCE HEATING

M & J Drilling Services has invested significantly in new plant for this expanding market.

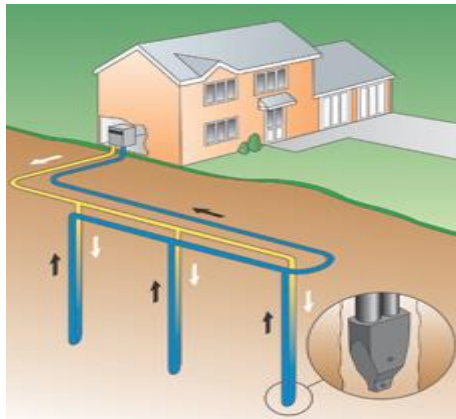


Fig 1 Ground Source Heat Pumps

Our new sealed grouting system produces a homogenous grout mix ensuring good contact between the loop & the surrounding ground, maximising thermal transfer & minimising waste.



Fig 2 Sealed grouting system

We have also invested in cable reels to minimise manual handling of the loops & assist installation



Fig 3 Installing ground loops



Unit 44, Coneygree Industrial Estate
Tipton, WEST MIDLANDS DY4 8XP

Telephone: 01902 885241

Fax No: 01902 887257

E-Mail: enquiry@mandjdrilling.com

Website: www.mandjdrilling.com

Utilising several different rigs we have installed ground loops of 32mm & 40mm diameter to depths of up to 120m.

We have undertaken drilling & ground loop installation on both new & existing development (retrofit).



Fig 4 Drilling to install ground loops

Some examples of recent projects:

Tipton- Installation of 40mm loops between 60m & 100m for blown air & under floor heating system. Value £100,000

Oxford- Installation of 40mm loops to 75 metres for existing residential development. Value £50,000

Tottenham, London- Installation of 32mm loops to 100m for new university development. Value £25,000

Norfolk- Installation of 32mm loops to 50m for new residential development. Value £20,000



Reg. No. 1650049. Reg. Office: Unit 44,
Coneygree Industrial Estate, Tipton, West Midlands DY4 8XP
V.A.T. Reg. No. 369 6295 96

SOIL NAILING & ROCK ANCHORS

M & J Drilling Service Ltd has been involved in soil nailing & rock anchoring for a number of years.



Fig 1 Installing Platipus Anchors for sheet piles

We offer a complete design & build service using rotary & rotary percussive drilling rigs.

Soil nailing represents a highly efficient method of constructing near vertical slopes.

The system allows Developers & Engineers to maximise the potential development footprint of a site.



Fig 2 Installing soil nails

We have installed several different nail systems including Dywidag & Ischebeck Titan for both temporary and permanent works.

We have installed anchor piles and ground slabs for the telecommunications industry.

We have invested in new plant including a new radio operated, sealed grouting system.



Fig 3 Sealed grouting plant

This system allows us to increase the efficiency of installing the soil nails.



Fig 4 Finalised soil nail wall

Some examples of recent projects:

Gotherington, Gloucester – Installation of soil nails for failed railway embankment. Value £160,000

Kingsbury, Tamworth – Installation of soil nails for railway embankment. Value £500,000

Droitwich – Installation of soil nails for residential development. Value £50,000

Redditch – Installation of rock anchors for highway development. Value £30,000

MISCELLANEOUS DRILLING WORKS

M & J Drilling Services Ltd has been involved in Drilling Projects for over 25 years



Fig 1 Drilling to stabilise harbour arm wall

Utilising a modern fleet of drill rigs we operate throughout the UK from our base in the West Midlands. We undertake various drilling projects of varying complexity including borehole decommissioning, predrilling for piles and dam water sealing works.



Fig 2 Site Investigation for Salt Mine

We can readily adapt our drill plant to suit a projects needs. We also have extensive ancillary plant



Fig 3 Predrilling for Shaft Construction



Fig 4 Canal Wall Stabilisation

Some examples of recent projects:

Margate- Stabilisation of harbour arm wall
Value £240,000

Northwich – Investigation of former salt mine. Installation of monitoring
Value £75,000

Grange over Sands- Predrilling for Shaft Construction
Value- £50,000

Brentford – Stabilisation of canal wall for leak sealing
Value £50,000

A yellow excavator with a red safety cage is positioned on a dirt and gravel surface. The excavator's arm is extended upwards. In the background, there are green trees and a blue building. The text "CASE STUDIES" is overlaid in the center of the image.

CASE STUDIES

STABILISATION OF SHALLOW MINEWORKINGS & MINE ENTRIES- CASE STUDIES

Manchester Sports City, Eastlands

Project- Stabilisation of Shallow Coal Workings for major commercial & Leisure redevelopment.

Description- Covering an area of almost 7 Hectares, the development in Eastlands, Manchester required the stabilisation of shallow mine workings associated with the former Bradford Colliery.



Fig 1 Manchester Sports City

The site was situated next to the City of Manchester Stadium which required careful coordination & control of the works.

The project lasted for 24 weeks in which time over 12,000m of drilling was carried out and 1500 Tonnes of pfa:opc grout was injected.



Fig 2 Mineshaft Treatment Works

A total of 15 mineshafts were also located and treated as part of the works.

Victoria Hospital, Kirkcaldy, Fife

Project- Stabilisation of shallow coal workings for new pathology laboratory.

Description- A major NHS hospital development required the stabilisation of extensive shallow coal workings.



Fig 3 Grouting Set up

Working under strict time constraints and site restrictions due to both client requirements & other contractor's works, a total of 200 boreholes were drilled to an average depth of 40 metres. Works were completed within the 5 week programme.



Fig 4 Drill Rigs at Kirkcaldy

On completion the new pathology laboratory will serve the extension to the Victoria Hospital as well as other NHS facilities in Fife.

BULK INFILL OF MINEWORKINGS & OTHER VOIDS- CASE STUDIES

Northwich Salt Mine

Project- Stabilisation of 4 abandoned Salt Mines located in Northwich Town Centre

Description- As part of a £32 million scheme to stabilise 4 redundant Salt Mines we provided drilling & technical services.

The scheme is the largest mine infill project in the UK undertaken to date.



Fig 1 Drilling into the mine

Boreholes were drilled to depths of up to 95 metres utilising a re-circulated brine flush.

The project was based in a busy town centre requiring minimal disruption to traffic and pedestrians.



Fig 2 Drilling for site investigation at Northwich

Working in partnership with Wrekin Construction over 800,000 m³ of pfa/cement based grout was injected into the mine.

Pentland Retail Park, Edinburgh

Project- Stabilisation of former Limestone Mine located beneath a working Retail Park.

Description- The Retail Park was to be expanded. A former limestone mine was known to exist beneath the park and parts of it had been stabilised previously.

Minimising disruption to the retail park was our prime concern. We utilised a variety of different methods including directional drilling in order to achieve this.



Fig 3 Setting up grouting area & compound

The project required 2 sections of the mine to be isolated in order to minimise material costs. To this end a gravel barrier was installed around each section utilising over 8000 Tonnes of pea gravel.

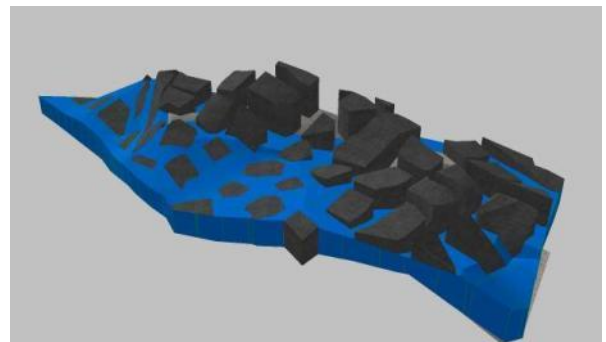


Fig 4 Mines Model

Over 25,000 Tonnes of grout were injected into the mine

SONIC DRILLING CASE STUDIES

Montrose, Scotland

Project- Continuous core sampling and large diameter well installations at operational chemical plant.

Description- A remediation scheme had been designed requiring the installation of a series of deep steam wells to remove volatile organics from the surrounding ground.



Each borehole was cored from the surface in order to allow discrete sampling for chemical analysis.

Once the borehole was complete a series of 50mm diameter steel pipes were installed.



A total of 51 boreholes to an average depth of 18m were drilled.

Thames Tideway Tunnel, London

Project- Continuous core sampling to identify sand & gravel lenses in London Clay for large diameter sewer.

Description- Sonic drilling was identified as an alternative to wire line core drilling in order to quickly identify zones for further investigation. The project involved drilling a series of boreholes at several locations in the London area. Each borehole was core sampled from surface to a depth of 60m.



Each borehole was completed in less than one day.



The sonic drill rig allowed the main site investigation contractor to quickly identify zones for further investigation by wire line sampling thereby reducing the cost of wire line drilling.



COMPANY PROFILE

COMPANY PROFILE

Address & Registered Office:

Unit 44
Coneygree Industrial Estate
Tipton
West Midlands
DY4 8XP

Tel: 01902 885241

Fax: 01902 887257

email: enquiry@mandjdrilling.com

web address: www.mandjdrilling.com

Financial details:

Company was registered in 1982, number is 1650049

VAT registration number is 369 6295 96

Unique Tax Reference (UTR): 56930 72488

CITB registration number is 1083047

Principals:

Managing Director	Steve Rule
Plant Director	Steve Brown
Contracts Manager	Pat Murray
Senior Estimator	Dave Weaver

Company background:

The company was founded by M Woods and J Harper in 1982 to offer specialist contracting services in the investigation and stabilisation of mineworkings and mineshafts, concentrating its activities in the South Staffordshire Coalfield. It has grown steadily, investing heavily to provide state-of-the-art drilling rigs and associated equipment, and now operates nationally from its base in the West Midlands.

The founders started to withdraw from the business in the late 1990's, retiring fully in 2001. A new management team was put in place during this phase and is now well established. They are supported by a team of engineers, geologists and surveyors, and have the benefit of a highly experienced, stable workforce.

The company has always invested time and money in the training and development of the work force, ensuring that employees are able to work safely and efficiently so that they can help the business to grow. This ongoing effort was recognised in August 2002 when we first achieved the Investors in People award, which has subsequently been re-accredited in August 2005, August 2008 and most recently in August 2011.

Scope:

The company is a specialist contractor involved in the development and delivery of geotechnical solutions to various ground problems. The main activities of the company are drilling (rotary, rotary percussive and sonic) and grouting, and the list that follows gives details of the applications:

- 1) Rotary investigation (open hole drilling, coring and installation of standpipes)
- 2) Sonic Rotary investigation (continuous non-flush coring)
- 3) Stabilisation of shallow mineworkings (drilling and grouting)
- 4) Mineshaft (location and treatment)
- 5) Void infilling (large mine workings)
- 6) Soil nails and ground anchors – to improve slope or embankment stability
- 7) Sewer and tunnel grouting
- 8) Other underground stabilisation work (e.g. cellars and gas tanks)
- 9) Installation of geothermal heating loops
- 10) Self drilled or drilled/cased, reinforced concrete piles up to 300mm diameter

Major items of plant:

The company owns almost all of the plant and equipment that is used on a day to day basis, including all of the drilling rigs. Plant and vehicles are maintained by our own team of well experienced and qualified plant fitters.

- 13 No. Klemm 802 Drilling Rigs
- 1 No. Klemm 806 Drilling Rig
- 1 No. Klemm 701 Mini Drilling Rig
- 1 No. Klemm 140 / KD204 Drilling Mast
- 1 No. Mini Rig with Klemm KD204 Drifter Head
- 1 No. Sonic SDC550 Drilling Rig
- 1 No. Casagrande C6 Drilling Rig
- 1 No. Marini MCDP Air/Hydraulic Drill Mast on Frame Carrier
- 1 No. Marini CID80 Hydraulic Drill Mast on Working Platform
- 1 No. TEI MP250 Hydraulic “Man Portable” Drill Mast
- 1 No. TEI HEM550 Hydraulic Drilling Mast
- 1 No. Belmix C40 Continuous Mixing Plant
- 1 No. Belmix C20 Continuous Mixing Plant
- 3 No. Sami 40 tonne capacity Horizontal Silo
- 1 No. Sediment Separation “Mud Shaker”
- 1 No. Geo-Loop 50-500 Portable Grout Mixer
- 1 No. Kuchler K-Mungge 08 Electric Portable Grout Mixer / Pump

Ancillary plant includes a wide range of grouting equipment, compressors, rough terrain forklifts, tractor loading shovels, bowzers etc. The plant resources enable the company to meet the high standards of current specifications within tight time scales, which are invariably required in the Construction Industry.

Health & Safety:

The Company has always operated with great regard to the Health & Safety of its employees, particularly in view of the inherently hazardous working environment, the operation of powerful and potentially dangerous plant and of our intention to maintain long-term continuity of service in a stable workforce.

Every effort has been made to embrace the full requirements of legislation from Health Screening to Risk Assessments and from Employee Consultation to the CDM Regulations. Developments in drill rig design have improved safety in operation and environmental aspects, and our level of investment is such that we are using

Health & Safety (Continued):

these modern rigs almost exclusively. All our operational drilling rigs are fitted with integrated interlock guards in accordance with current HSE guidance. The Directors are confident that with the continued interactive monitoring of safety matters and with the assistance of our retained Safety Consultants, Safety Management Limited, the company will maintain its high standards of safety.

Continuing our commitment to improving safety, 100% of our workforce are CSCS cardholders and 95% have attained their NVQ Level 2 in Land Drilling and Plant Operation. In addition to this a number of our key employees hold CPCS Competent Operator Cards for selected items of plant. The Company achieved initial Contractors Health & Safety Assessment Scheme Registration (CHAS) in October 2006 and has successfully renewed the assessment every year since then. Current accreditation runs until November 2012. In addition to this we also hold accreditation to SMAS until December 2012.

Quality Assurance:

The Company has always been proud of its commitment to quality and its reputation for professionalism in the industry. With the guidance of specialist independent consultants a quality manual was prepared based on our established systems of work within which accurate record keeping and traceability are the fundamental principles. We gained accreditation to ISO 9001:2000 during April 2006 and have current certification to the new ISO 9001:2008 standard until April 2015. We initially gained accreditation to IIP (Investors in People) in August 2002, and have subsequently re-attained certification every 3 years thereafter. Further to this the company attained accreditation to Constructionline in November 2007 in categories comprising Site Investigation, Anchors, Soil Nails, Ground Stabilisation and Deep Grouting, current certification runs until June 2012.

Contract Record:

Customers range from householders requiring a couple of boreholes prior to building house extensions, through to national house builders, local authorities and major civil engineering contractors. The value of contracts can be £1500 up to £5 million and can last from a day to several years. Average turnover in recent years has been £5/6 million per annum.

We aim to develop strong relationships with both consultants and developers and are proud of the fact that over recent years, 85% of each years turnover has been with clients who we have worked with in previous years.

Appendix 1: Example Contracts ongoing/recently completed

Client	Site	Completion Date	Approximate duration	Description	Consultant	Contract Value (£)
J S Bloor North West Office	Former Clanway Brickworks Stoke-on-Trent	5 Phases 2008 to 2012		Treatment of shallow mineworkings and mineshafts	Wardell Armstrong Stoke Office	1,200,000
Taylor Wimpey Homes Solihull Office	Various sites	Ongoing	2 years	Reclamation scheme for redevelopment. Shaft treatment and shallow mineworkings.	Various	500,000
Keepmoat Homes	Priory North Estate, Dudley – Phase 1	Nov 2010	6 weeks	Limestone mine check infill	Sirius / Dudley MBC	250,000
Advantage West Midlands Stoke County Council	Chatterley Whitfield Working Museum	January 07 to April 07	15 weeks	Stabilisation of shallow mine workings	White Young Green	280,000
Buckingham Group	Manchester Eastlands Sportcity	March 2011	20 weeks	Stabilisation of shallow coal mine workings and deep mineshafts	Arup/BWB	600,000
Vale Royal Borough Council/ Wrekin Construction	Northwich Rock Salt Mines	December 2007	3 years	Drilling works associated with the infilling of 4 mines, including the treatment of 10 mineshafts	Wrekin Construction with Arup	M&J works 4,500,000
J Murphy Pipelines	United Utilities – West East Link Main, Lancashire	November 2010	14 months	Treatment of mine workings & mineshafts along 54km route of 1.2m diameter pumped water main	Jacobs/Atkins	1,500,000
Manor Homes	Bunkers Hill, Lincoln	May 2011	3 weeks	Ironstone stabilisation	M&J Drilling	55,000
Costain Ltd	Greater Manchester Waste – Bolton	December 2011	8 weeks	Stabilisation of shallow coal mine workings	URS - Scott Wilson / Costain	215,000
Buckingham Group	Manchester – Openshaw West	March 2012 & July 2012	16 weeks	Treatment of mine workings & location / treatment of mineshafts	WYG/BWB	550,000
St. Modwen Developments	Phoenix Enterprise Park (Phase 2)	February 2012	4 weeks	Treatment of mineworkings and mineshafts	Halcrow	100,000
Interserve plc	Victoria Hospital, Kirkcaldy, Fife	March 2011	4 weeks	Stabilisation of shallow Mineworkings	Curtins Consulting	135,000

Client	Site	Completion Date	Approximate duration	Description	Consultant	Contract Value (£)
Keepmoat Homes / Bromford Homes/ HCA	Priory North Estate, Dudley – Phase 2	May 2012	6 weeks	Limestone and coal mine stabilisation drill & grout	Applied Geology / Dudley MBC	245,000
Walsh Construction	Gotherington Landslip - GWSR	November 2010	6 weeks	Soil Nailing for stabilisation of railway embankment	David Symonds/ GIP	140,000
Anglo Holt Construction Ltd	Rail Embankment Dordon, Tamworth	September 2009	16 weeks	Soil Nailing for stabilisation of railway embankment	David Symonds/ GIP	530,000
George Law	Winchcombe Landslip - GWSR	Ongoing	4 weeks	Soil Nailing for stabilisation of railway embankment	David Symonds/ GIP	85,000
Mansell plc / Birse	Blists Hill Museum Ironbridge	June 2009	6 weeks	Soil nail stabilisation of car parks and narrow gauge railway line	Tony Gee & Ptns	185,000
Taylor Wimpey	Prescot St Helens	June 2008	16 Weeks	Stabilisation of mineshafts	WSP Manchester	850,000
George Wimpey (North)	Black Country and Stoke Area	June 2006 Dec 2007	23 months	Mineshafts and workings	Wardell Armstrong Birmingham Office	2,000,000
Earth Energy	Various throughout the UK	September 2007		Installation of geothermal heating loops	Earth Energy	Approx. 500,000
Peel Holdings	Pentland Retail Park, Edinburgh	September 2007	26 Weeks	Infilling of Limestone workings	Couch Consulting	1,585,000
Advantage West Midlands	Bilston Urban Village	October 2006 to May 2007	32 weeks	Stabilisation of mineshafts and shallow mineworkings	Waterman Group	1,200,000
Bovis Homes	Blacksworth Road Bristol	January 2008	10 Weeks	Stabilisation of mineshafts and shallow mineworkings	Wilson Associates	60,000
Buckingham Group	Rooley Lane Bradford	March 2008		Stabilisation of mineshafts and shallow mineworkings	BWB Consulting	430,000
Prologis	Rooley Lane Bradford	September 2007	10 Weeks	Site Investigation	BWB Consulting	80,000
Local Authority Wolverhampton City Council	Wolverhampton Area	2000-2011		Stabilisation mineworkings and mineshafts, Site Investigations	Johnson Poole & Bloomer / WYG Jacobs	250,000 per year

Appendix 2: Examples of longer term contracts and partnerships

Public Body	Details	Dates	Financial years reviewed	Contract Value (£)
Coal Authority	Term contract for the stabilisation of mineshafts and mineworkings	Oct 01 – Jun 03, Jul 03 – Mar 05 Apr 05 – Mar 08 Apr 08 – Mar 11	2001/2 – 2004/5 2005 - 08 2008 – 2011	765,000 300,000 200,000
Metropolitan Borough of Dudley	Term Tenders for the investigation & stabilisation of mineworkings and mineshafts	1983 –1986, 1991 –1992, 1994 –1996 1999 – 2002 - 2008 - 2011, 2011 to 2013	1998 – 2012	3,450,000
Wolverhampton City Council	Term Tenders for the investigation & stabilisation of mineworkings and mineshafts	1983 – 1987, 1990 –1991, 1993 – 1994, 1996 – 2004, 2005 – 2007, 2008 - 2011	1998/99 – 2004/05 2005/08	946,000 1,500,000
Walsall Metropolitan Borough Council	Term Tenders for the investigation & stabilisation of mineworkings and mineshafts	2002 – 2007	2002/3 – 2004/5 2005/7	195,000 150,000
Ground Investigation & Piling Ltd (M & J acting as a rotary drilling sub-contractor)	Term Tenders for the investigation & stabilisation of mineworkings and mineshafts with English Partnerships, Wolverhampton CC, Dudley MBC and Telford & Wrekin	Since 1982 to present Long term working partnership (GIP doing soils and reporting)	2002 – 2008 2008 – 2011	1,000,000 350,000
Wrekin Construction	Specialist drilling and geotechnical sub-contractor on infilling limestone workings in the West Mids & Scotland, with Wrekin as main contractor	The following mines between 1994 & 2000: Guest Hospital, Cow Pasture, Mellish Road, East Castle/Castle Mill, Lilleshall Wrens Nest Project, Dudley	1994 – 2000 2003 – 2006	Approx £6 million Approx £300,000

Key Personnel

Steve Rule- Managing



Steve has some 20 years experience working in the drilling industry and major underground Mine Stabilisation Schemes. He trained as an Engineering Geologist and Mining Engineer in Colorado (1985-89), employed as a Resident Geotechnical Engineer with Arup (1990-94) on numerous Limestone Mine Infilling Contracts in the West Midlands. Engineer with M&J Drilling from 1994-1999. Consulting Geotechnical Engineer from 1999 to 2006, returned to M&J Drilling in 2007.

Steve Brown- Plant Director



Steve has been an integral part of the team at M&J Drilling since its formation in 1982. Employed as Plant Manager from 1982 to 2003, he is now Plant Director. Responsible for Major Plant Procurement, Specialist Fabrication, Plant and Transport logistics, Building development and maintenance, Plant Safety, Development of ancillary plant for drilling and grouting operations.

Pat Murray- Contract/Safety Manager



Pat has almost 30 years experience working on Civil Engineering, Drilling and Mine Stabilisation Projects. He is NEBOSH qualified and has been our Health & Safety Manager since 2005. He has overall responsibility for the day to day management of all our drilling sites.

Dave Weaver- Estimator/ Senior Engineer



Dave has over 30 years experience working on mine stabilisation projects. He has worked for both contractors & consultants. Dave is responsible for estimating/pricing of projects

Key Personnel

Steve Stanley- Plant Manager



Steve Stanley has been with M&J Drilling since 1993. He is an extremely experienced plant and hydraulic systems engineer. Our Plant Manager since 2003 he is responsible for all aspects of plant management and maintenance. He heads up our team of experienced plant fitters.

Scott Johnson- Project Engineer



Scott has been with M&J Drilling since 2002, he is a qualified Land Surveyor, FGS and MIMMM (IEng). Scott formerly worked with Arup (1988-2002) in the Civils and Geotechnics Departments, involved with a number of Major Civil Engineering Schemes. He is responsible for the Engineering Supervision of Drilling Works.

Dave Turner- Senior Engineer

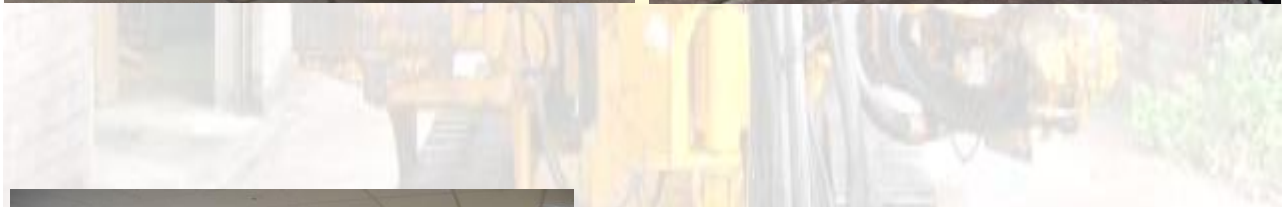


David has been with M&J Drilling since 2002, he has a BEng (Hons) in Chemical Engineering and an MSc in Environmental Engineering. He is responsible for the Engineering Supervision of Drilling Works.

Isabel Mason- Office Manager



Isabel has been with M&J Drilling since 1987, initially employed as our Secretary, Receptionist and Accounts Clerk, Isabel has been the Office Manager now for a number of years and is responsible for general office administration.



**UNIT 44
CONEYGREE INDUSTRIAL ESTATE
TIPTON
DY4 8XP**

Telephone: 01902 885241

Fax No: 01902 887257

E-Mail: enquiry@mandjdrilling.com



Reg. No. 1650049. Reg. Office: Unit 44,
Coneygree Industrial Estate, Tipton, West Midlands DY4 8XP
V.A.T. Reg. No. 369 6295 96